

# Enchanting JAPAN DISCOVERY & RAIL ADVENTURE

INCLUDES  
SOUTHERN  
JAPAN ALPS  
RAIL  
JOURNEY

INCLUDES  
13 NIGHT  
FULLY ESCORTED  
TOUR &  
FLIGHTS



**15 NIGHT FLY, RAIL & STAY HOLIDAY**  
DEPARTURES MAY - NOVEMBER 2025

**From high-speed bullet trains reaching over 300 kilometres per hour to steam trains meandering through forested ravines, this holiday will show you Japan's natural and modern marvels by rail.**

In Tokyo, you'll enjoy a fully guided tour of the city, taking in captivating sights including the holy Meiji Jingu shrine and bustling Ginza. Next, discover the serene lakes at the foot of Mount Fuji, its mythical form rising in the distance, and step aboard the Southern Alps steam train for a journey along the Oi River.

From the past to the present, the high-speed bullet train will whisk you in futuristic comfort to Nagoya, where you'll visit the Edo-era Takayama Jin'ya and UNESCO World Heritage-listed Shirakawa Village. In Kyoto, walk amidst the Arashiyama Bamboo Grove ahead of hotel stays in Hiroshima and Osaka – the perfect finale to this adventure across Japan.

## YOUR HOLIDAY INCLUDES:

### Hotel Stays including breakfast

- 2 night four-star hotel stay in Tokyo at the Grand Nikko Tokyo Daiba
- 2 night four-star stay in Shizuoka at the Hotel Associa Shizuoka
- 1 night four-star hotel stay in Takayama at the Mercure Hida Takayama
- 1 night four-star stay in Kanazawa at the Kanazawa Tokyu Hotel
- 3 night five-star stay in Kyoto at the THE HOTEL HIGASHIYAMA by Kyoto Tokyu Hotel
- 2 night four-star stay in Hiroshima at the RIHGA Royal Hotel Hiroshima
- 2 night four-star stay in Osaka at the Osaka Excel Hotel Tokyu

### Rail Journeys\*

- Southern Alps Abt Scenic Steam Train
- Bullet Train from Shizuoka to Nagoya
- Sagano Scenic Railway
- Kanazawa to Kyoto Thunderbird Train
- Bullet Train from Kyoto to Hiroshima
- Bullet Train from Hiroshima to Osaka

### Fully Escorted Tours

- Tokyo city tour
- Mount Fuji 5th Station, Lake Yamanaka and Lake Kawaguchi
- Southern Japan Alps tour
- Shirakawa Village
- Fushimi Inari Shrine and Tea Ceremony
- Gion evening walking tour
- Kyoto full-day tour including Nijo Castle and Arashiyama Bamboo Forest
- Hiroshima Peace Memorial Park
- Miyajima Island half-day tour

### All Flights, Taxes & Transfers

- Overnight flights ex Perth or Sydney ex Brisbane or Melbourne add \$300pp ex Adelaide add \$400pp

### DEPARTURE DATES:

14 May, 4 Jun, 3 Sep, 15 Oct & 5 Nov 2025

### HOLIDAY COSTS: (based on 3 Sep departure)

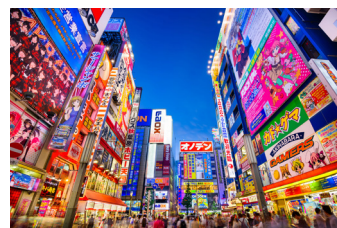
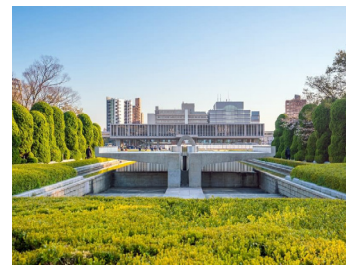
TWIN SHARE: **from \$8,299pp**

SINGLE PASSENGER: from \$10,299pp



### ITINERARY SNAPSHOT

Day 1	Fly overnight to Tokyo
Day 2	Toyko Hotel Stay
Day 3	Toyko Tour & Hotel Stay
Day 4	Toyko Tour & Shizuoka Hotel Stay
Day 5	Shizuoka Tour & Hotel Stay
Day 6	Takayama Tour & Hotel Stay
Day 7	Takayama Tour & Kanazawa Hotel Stay
Day 8	Kyoto Tour & Hotel Stay
Day 9	Kyoto Tour & Hotel Stay
Day 10	Kyoto Hotel Stay
Day 11	Hiroshima Tour & Hotel Stay
Day 12	Miyajima Tour & Hiroshima Hotel Stay
Day 13	Osaka Tour & Hotel Stay
Day 14	Osaka Hotel Stay
Day 15-16	Fly home



The Professional Centre, Suite 1, 189 Ashmore Road, Benowa  
Phone: (07) 555 79 888 | Freecall: 1300 786 888  
info@zt.com.au | www.zt.com.au



*Terms and conditions apply. The departure date is subject to change based on flight times specified during the booking process. Named hotels are based on availability and are subject to change without notice. Alternative hotels will always be of equal or higher star rating. \*Luggage transfer provided when travelling on Bullet Train to hotel.*