



The Commodore Members Cruise

*All-Inclusive Luxury
Silversea Expedition*

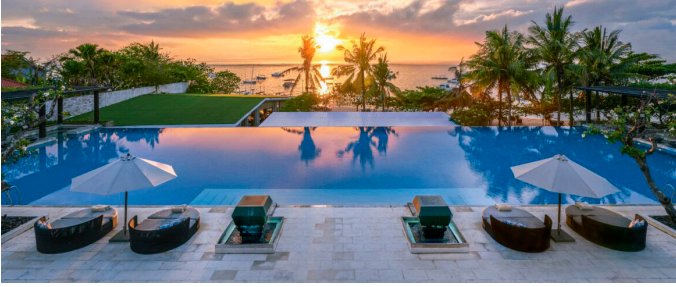
THE KIMBERLEY & INDONESIA

21 Days | Departs 1 July 2025

**GREAT
SAVINGS!
+ BONUS
3 night, 5 star
hotel stay
in Bali**

**SYC
Members
SAVE an
additional
\$1,000pp**

*Spend 3 nights at the luxurious
5 star InterContinental Bali Resort Sanur*



*16 night all-inclusive cruise onboard the
6 Star Silver Cloud*



Dear Members,

My wife, Karen and I, are thrilled to invite you to a one-of-a-kind opportunity to set sail with us on a luxurious cruise! This is your chance to enjoy an unforgettable journey, filled with camaraderie, breathtaking views, and exceptional experiences.

Whether you're a seasoned sailor or new to the waters, this voyage promises something special for everyone. Join us as we navigate stunning waterways, share memorable moments, and celebrate our shared passion for the sea.

Reserve Your Spot Today!

Spaces are limited, so we encourage you to book early.

We look forward to welcoming you aboard!

Warm Regards,

Glenn

Glenn Burrell
Commodore
Southport Yacht Club

VOYAGE HIGHLIGHTS

- **Hunter River Region (Kimberley)** – Gateway to the famed four-tiered Mitchell Falls, the immense mangrove system found here is home to numerous bird species and the infamous saltwater crocodile.
- **Montgomery Reef (Kimberley)** – As the tides recede, this spectacular reef emerges from the sea to reveal a spectacle of cascading waterfalls, vibrant marine life and a dynamic landscape that transforms before your eyes.
- **Alor (Indonesia)** – With its hidden coves and brilliant lagoons, this off-the-radar island is paradise for snorkellers, a marine hotspot of playful dolphins, elegant manta rays and a dazzling array of tropical fish.
- **Bau-Bau (Indonesia)** – Nestled on the enchanting shores of Buton Island, here you'll find unspoiled beaches, a rich cultural heritage and a vibrant tapestry of traditions that showcase the heart of Sulawesi with authentic experiences.
- **Komodo Island (Indonesia)** – The centrepiece of the UNESCO-listed Komodo National Park, this island seems as if it was left behind from the Jurassic Era, playing host to its namesake "dragons" which are the world's largest living species of lizard.

ALL-INCLUSIVE LUXURY EXPEDITION



AMAZING VALUE! ALL-INCLUSIVE!

Standard CRUISE ONLY fare from \$22,100pp
Our FLY, CRUISE & STAY fare from \$19,599pp



YOUR HOLIDAY INCLUDES:

- Economy class flight Brisbane to Darwin
- Return transfers (Airport/Hotel/Port)
- 1 night at the Hilton Darwin
- 16 night all-inclusive cruise on *Silver Cloud*
- Welcome Commodore Cocktail Party
- Personalised service – the best crew-to-guest ratio in expedition cruising
- Butler service in every suite – all guests are pampered equally
- Open-seating dining options – dine when and with whomever you please
- Beverages in-suite and throughout the ship – select wines, premium spirits, specialty coffees, and soft drinks, plus your own tailored mini-bar
- In-suite dining and 24-hour room service available aboard *Silver Cloud*
- Enrichment lectures by a highly qualified Expeditions Team
- Guided Zodiac, land and sea tours, and shoreside activities led by the Expeditions Team
- Gratuities always included in your fare
- Return transfers (Port/Hotel/Airport)
- 3 nights at the Intercontinental Bali Resort Sanur
- Economy class flight Denpasar to Brisbane

ITINERARY OVERVIEW

21 Days | Departs 1 July 2025

Day 1: 1 July	Fly to Darwin, 1 night stay
Day 2: 2 July	Darwin, embark <i>Silver Cloud</i>
Day 3: 3 July	Koolama Bay
Day 4: 4 July	Vansittart Bay (Jar Island)
Day 5: 5 July	Hunter River Region
Day 6: 6 July	Freshwater Cove Montgomery Reef
Day 7: 7 July	Day At Sea
Day 8: 8 July	Darwin
Day 9: 9 July	Day At Sea
Day 10: 10 July	Kupang Pulau Semau
Day 11: 11 July	Kalabahi, Pulau Alor Senbajar Beach, Pulau Alor
Day 12: 12 July	Pulau Hoga
Day 13: 13 July	Bau-Bau
Day 14: 14 July	Palopo, Sulawesi
Day 15: 15 July	Day At Sea
Day 16: 16 July	Pink Beach, Komodo Komodo Island
Day 17: 17 July	Pulau Satonda
Day 18-20: 18-20 July	Benoa, Bali, disembark 3 night stay in Bali
Day 21: 21 July	Fly to Brisbane



THE KIMBERLEY

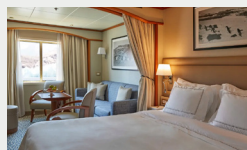
On the remote northwestern shores of Australia, a vast and rugged landscape of untamed beauty – wild coasts, gorges, waterfalls and more – reveals ancient secrets and indigenous cultures.



INDONESIAN ARCHIPELAGO

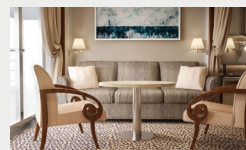
From rose-coloured sands and vibrant coral reefs to legendary dragons and extraordinary wildlife, these remote islands are a tapestry of breathtaking beauty and intriguing cultures.

COST: per person, in AUD*



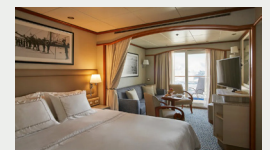
SUITE
Vista Suite
Deck 4
Size: 22m²

TWIN SHARE **\$19,599**
SINGLE **\$34,379**



Veranda
Deck 5, 6 & 7
Size: 27m² incl verandah (4.5m²)

\$23,665
\$41,578

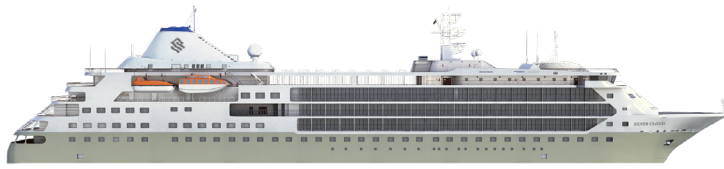


Deluxe Veranda
Deck 5 & 6
Size: 27m² incl verandah (4.5m²)

\$24,489
\$45,279

UPGRADE to Business Class airfare from: \$1,500pp*

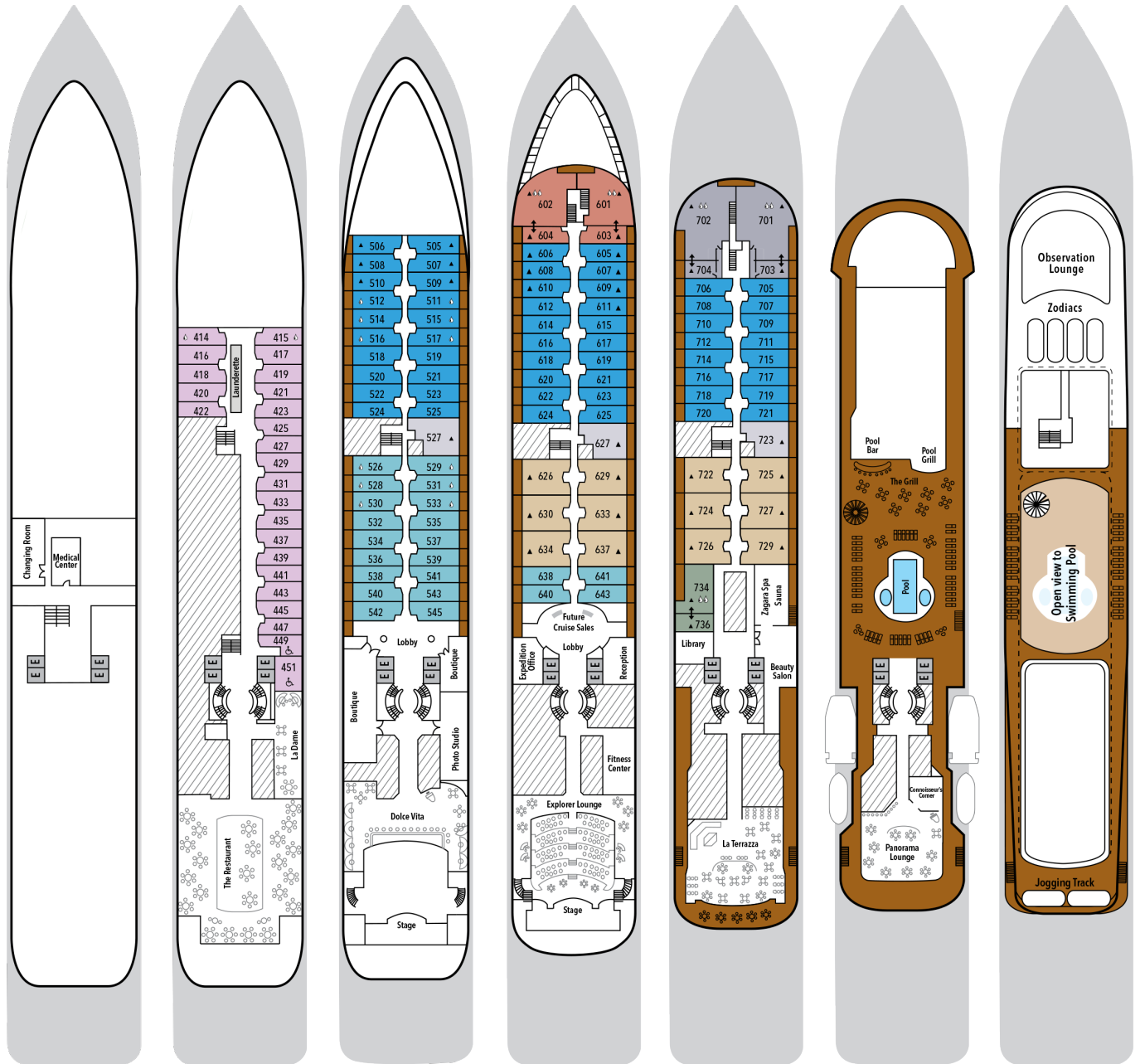
SILVER CLOUD DECK PLAN



4 dining options, 20 zodiacs and 10 kayaks equal almost limitless possibilities aboard Silver Cloud. Explore her large suites and spacious public areas by viewing her deck plan here.

Suite Categories

- Owner's Suite ●
- Grand Suite ●
- Royal Suite ●
- Silver Suite ●
- Medallion Suite ●
- Deluxe Veranda Suite ●
- Veranda Suite ●
- Vista Suite ●



DECK 3
Changing Room
Medical Centre

DECK 4
The Restaurant
La Dame

DECK 5
Dolce Vita
Boutique
Photo Studio

DECK 6
Explorer Lounge
Fitness Centre
Reception
Expedition Office

DECK 7
La Terrazza
Zagara Beauty Spa
Library

DECK 8
Pool
Pool Bar
The Grill
Panorama Lounge
Connoisseur's Corner

DECK 9
Observation Lounge
Zodiacs
Open view to Swimming Pool
Jogging Track

FOR MORE INFORMATION & TO BOOK, PLEASE CONTACT:



The Professional Centre, Suite 1, 189 Ashmore Road, Benowa
 Phone: (07) 555 79 888 | Freecall: 1300 786 888
info@zt.com.au | www.zt.com.au
 Facebook: [zeppelintravel](https://www.facebook.com/zeppelintravel) Instagram: [zeppelintravellau](https://www.instagram.com/zeppelintravellau)



*Terms and conditions apply. Prices are per person, in AUD. Business class airfare upgrade (Brisbane-Darwin & Denpasar (Bali) to Brisbane) is subject to availability. Please see Zeppelin Travel for more information.