



**SAVE**  
up to  
**\$1,000**  
per couple

**COMPLIMENTARY**  
Hotel Stays  
in Kyoto and  
Tokyo

# *All-Inclusive East Asia Azamara Voyage & Immersive Japan Discovery Tour*

**20 NIGHT FLY, CRUISE & STAY HOLIDAY**  
Departs 26 February 2026

**Embark on a journey of discovery, unveiling the cultural wonders of Southeast Asia and Japan with a 14-night cruise and a five-night tour of Japan's finest treasures.**

Your holiday begins with an overnight hotel stay in Singapore, followed by a voyage on board Azamara Pursuit. Sail to Ho Chi Minh City, where history meets modern life, then explore the imperial charm of Huế. Continue to Hong Kong, a vibrant blend of East and West, and Taipei, known for lively markets and tranquil temples. In Kagoshima, enjoy stunning views of the Sakurajima volcano.

Your journey continues disembarking in Kobe, starting with Kyoto's cultural treasures. In Mishima, take in breathtaking views of Mount Fuji, ride the Hakone Ropeway, cruise Lake Ashi and more, then unwind in a relaxing onsen in Hakone. During a two-night hotel stay in Tokyo, visit iconic landmarks like Asakusa Kannon Temple, Hamarikyu Garden and Ginza during a city tour.



## YOUR HOLIDAY INCLUDES:

### All-Inclusive Cruise

- 14 night all-inclusive cruise on *Azamara Pursuit*
- Complimentary alcoholic and non-alcoholic beverages including house spirits, wine and international beers
- Pre-paid gratuities and complimentary AzAmazing Evenings® event
- Concierge services for personal guidance and reservations
- Overnight in port in Ho Chi Minh City and Hong Kong

### Hotel Stays (including breakfast)

- 1 night five-star stay in Singapore at the Carlton Hotel Singapore
- Complimentary 2 night four-star hotel stay in Kyoto at the DoubleTree by Hilton Kyoto Station
- 1 night four-star stay in Hakone at The Hakone Lakeside, Hotel De Yama
- Complimentary 2 night four-star hotel stay in Tokyo at the Grand Nikko Tokyo Daiba

### Fully Escorted Tours

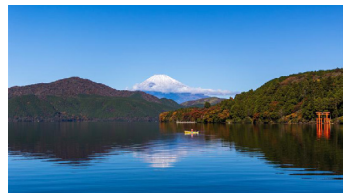
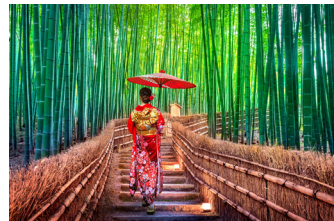
- Kyoto city tour including include Nijo Castle, Kinkakuji Temple, Ryoanji Temple and Sagano Bamboo Forest
- High-speed bullet train to Mishima
- Mount Fuji tours including the Mount Fuji Heritage Centre, views from Oishi Park and Lake Kawaguchi, Hakone Ropeway Cable Car and boat trip across Lake Ashi
- Buffet dinner and onsen (hot spring bath)
- Tokyo city tour including Asakusa Kannon Temple, Sumida River Cruise, Hamariyu Garden, Ginza, Imperial Palace Plaza and Meiji Shrine

### All Flights, Taxes & Transfers

- Overnight flights from Sydney and Perth.
- For departures ex Bris & Melb add \$200pp & Adelaide add \$400pp

## HIGHLIGHTS:

- Discover the wonders of South East Asia on a 14 night all-inclusive cruise
- Enjoy a 5 night tour of Japan's treasures
- Explore the capital city of Toyko
- Take Japan's bullet train to Mishima
- Enjoy a unique perspective of Japan's natural beauty on Hakone's Cable Car
- Admire the beauty of Mount Fuji
- Take a boat trip on Lake Ashi
- Discover Kyoto



### COST (per person, twin share):

**Club Interior** from **\$9,999**

**Club Oceanview** from **\$10,799**

**Club Veranda** from **\$11,819**



The Professional Centre, Suite 1, 189 Ashmore Road, Benowa  
Phone: (07) 555 79 888 | Freecall: 1300 786 888  
info@zt.com.au | www.zt.com.au



zeppelintravel



zeppelintravelau



Terms and Conditions apply, for full details please see Zeppelin Travel. All prices shown in AUS Dollars. Prices are per person based on two adults sharing a Club Interior and include flights from Sydney or Perth (regional flights available at a supplement). Credit cards surcharges apply to payments made by credit card. Prices are correct at the time of print and are subject to change. Offer applies to new bookings only. Named hotels are based on availability and are subject to change without notice. Alternative hotels will always be of equal or higher star rating. Holiday duration includes overnight flights when applicable and is subject to change. Prices shown include all discounts and savings.