



HAPAG ¹⁸/₉₁ LLOYD
CRUISES

AUSTRALIA & NEW ZEALAND

Fremantle (Perth) to Auckland



Cruise Australia's Southern Coast to Auckland

Set sail on an extraordinary voyage across the southern shores of Australia to the vibrant harbours of New Zealand. Departing from historic Fremantle, this remarkable cruise traces Australia's spectacular southern coastline before crossing the Tasman Sea to Auckland.

Enjoy a blend of stunning coastal scenery, iconic cities and memorable ports of call as you journey across the bottom of Australia in comfort and style onboard *EUROPA 2*.

**INCLUDES
EARLYBIRD
FARES!***



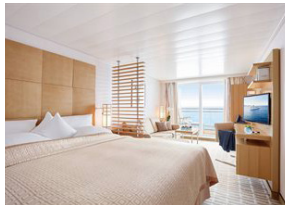
Voyage Highlights:

- Explore the relaxed coastal charm of Busselton, gateway to Western Australia's famous Margaret River wine region
- Discover the dramatic coastline and rich maritime history of Albany
- Experience the pristine nature and wildlife of Kangaroo Island, visiting via Penneshaw
- Enjoy time in elegant Adelaide, known for its vibrant culture, food and nearby wine regions
- Immerse yourself in the arts, laneways and dining scene of Melbourne
- Sail into the spectacular harbour of Sydney
- Visit beautiful Waiheke Island, renowned for its stunning Hauraki Gulf views
- Cross the Tasman Sea to the beautiful harbour city of Auckland, the grand finale to your journey

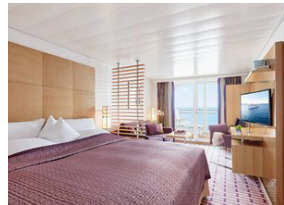


19 days | MS EUROPA 2 | 10 February - 1 March 2027

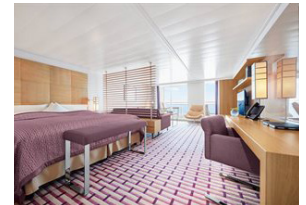
Prices per person, twin share from:



Veranda Suite
Cat 2 - \$20,899*
Cat 3 - \$23,250*



Ocean Suite
Cat 3 - \$23,250*
Cat 4 - \$23,980*



Grand Ocean Suite
Cat 6 - \$32,995*

With a maximum of 500 guests, you can expect maximum personal space and individualised service. And all this with an extremely luxurious number ratio of almost one to one. The *EUROPA 2* combines comfort with a high degree of flexibility by also calling at small harbours and remote corners off the beaten track. Welcome aboard the best cruise ship in the world!

Enjoy every moment

Informal and individual, exquisite and stylish, completely in line with your requirements - this is the philosophy of the *EUROPA 2*. Experience a symbiosis of perfection, elegance and aesthetics, and enjoy lifestyle at the highest level in a modern, relaxed atmosphere.

Good reasons to travel with EUROPA 2

- Casual luxury at the highest level
- Named the best cruise ship in the world^
- Maximum of 500 guests and more room per passenger than on any other cruise ship
- An exceptionally luxurious, almost one-to-one ratio of crew to passengers
- Outside suites only, each with their own veranda – between 35 m2 (376 ft2) and 114 m2 (1,227 ft2) in size
- Stylish culinary experiences in exclusive restaurants at no extra cost
- 1,000 m2 (10,764 ft2) spa and fitness area – including a fantastic ocean view
- High-class, hand-picked entertainment programme



The Professional Centre, Suite 1, 189 Ashmore Road, Benowa
Phone: (07) 555 79 888 | Freecall: 1300 786 888
info@zt.com.au | www.zt.com.au



*Terms and conditions apply. Fares are per person, twin share and subject to currency fluctuations. Earlybird fares available until 31 May 2026. Additional terms and conditions apply. To be read in conjunction with Zeppelin Travel and Hapag Lloyd booking terms and conditions. Please see Zeppelin Travel for more information. ^According to Insight Guides 2025.